

QUICK POSSESSION (1921-LC)
1129 - 28 Street NW
Edmonton

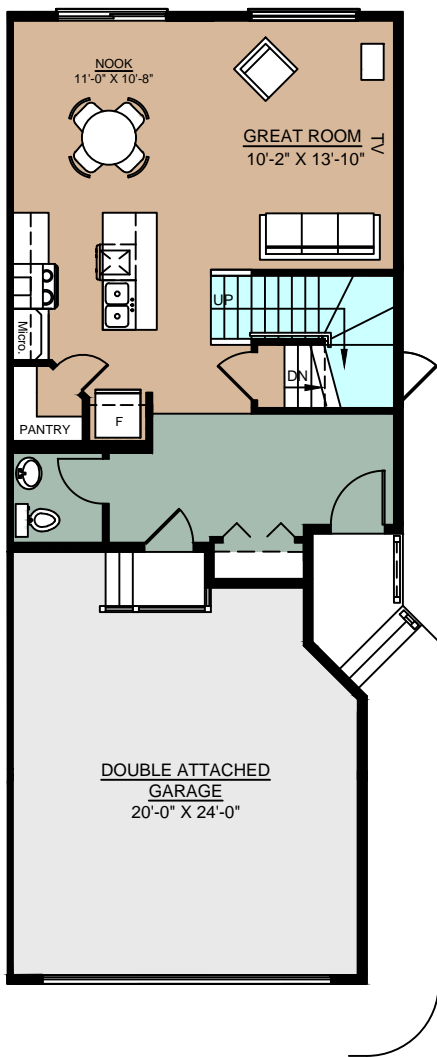
\$419,900 Warwick Craftsman

1,634 Sq Ft | 3 Bedrooms | 2.5 Bathrooms

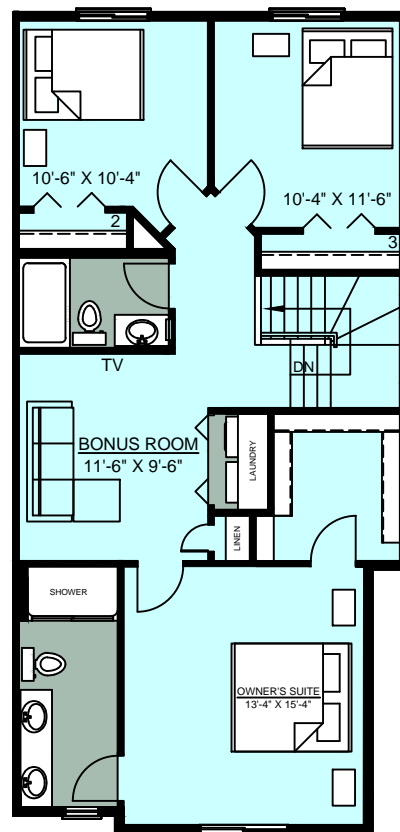
Carpet Laminate LVL



Craftsman



Main Floor 667 Sq Ft



Upper Floor 957 Sq Ft

Artist's rendition may be different than actual home

Dec 13/18

