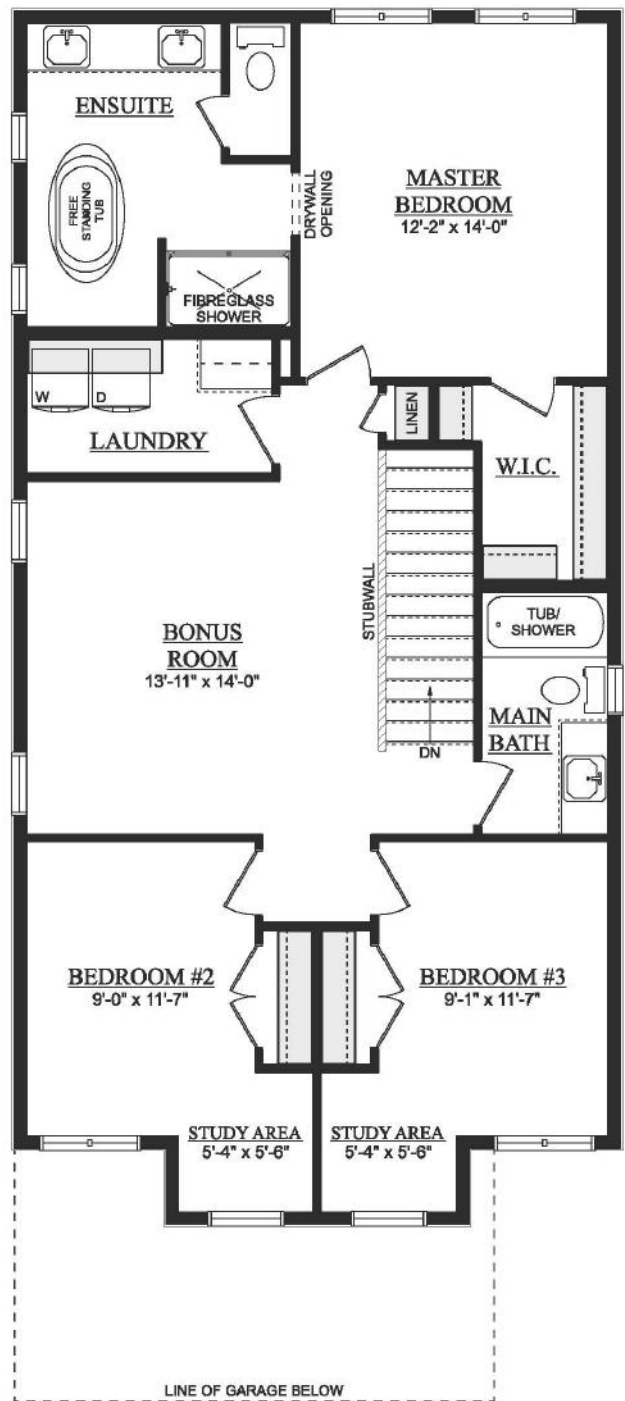
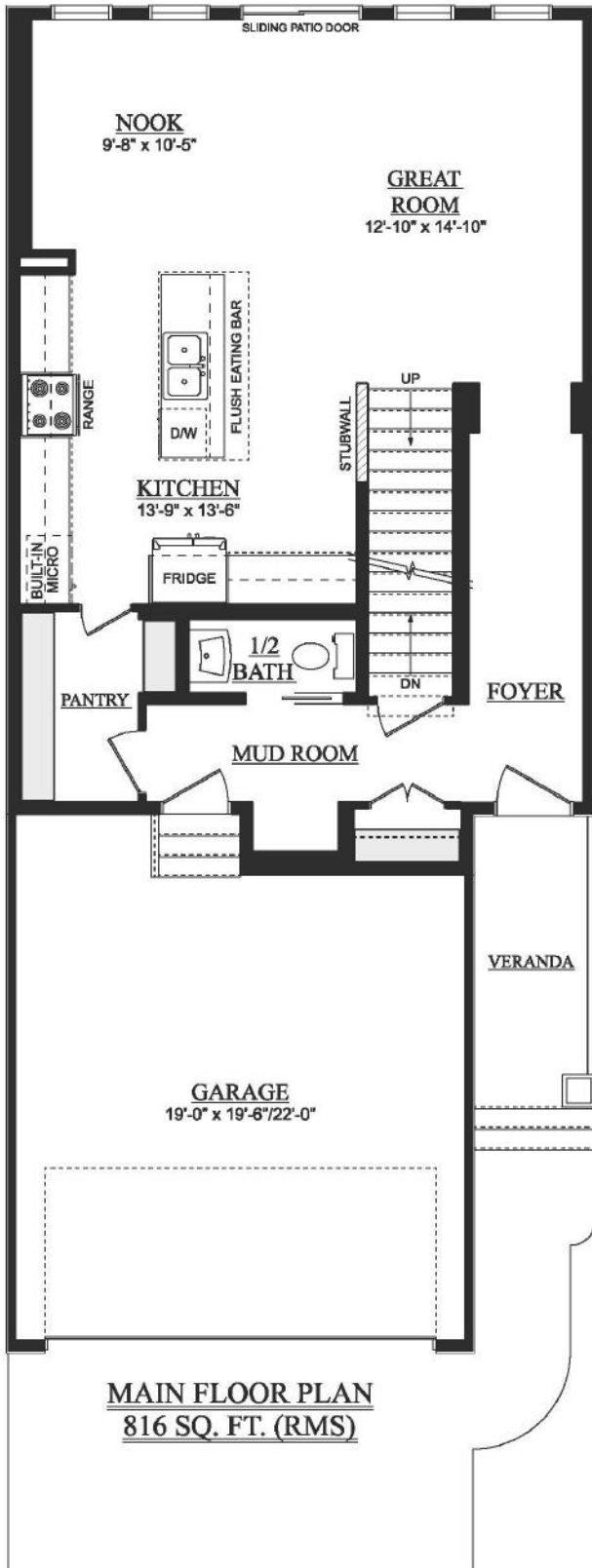


# Henrik

1,932 Sq Ft | 3 Bedrooms | 2.5 Bathrooms  
24' wide



Heritage



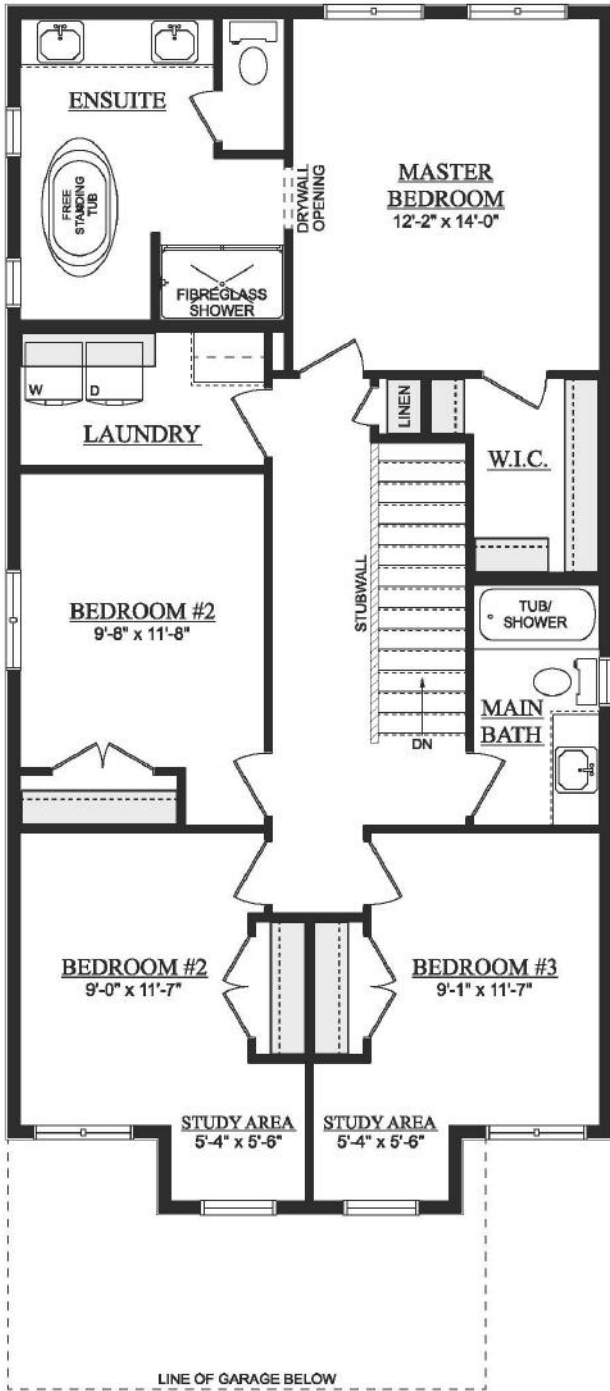
Artist's rendition may be different than actual home

Nov 20/23

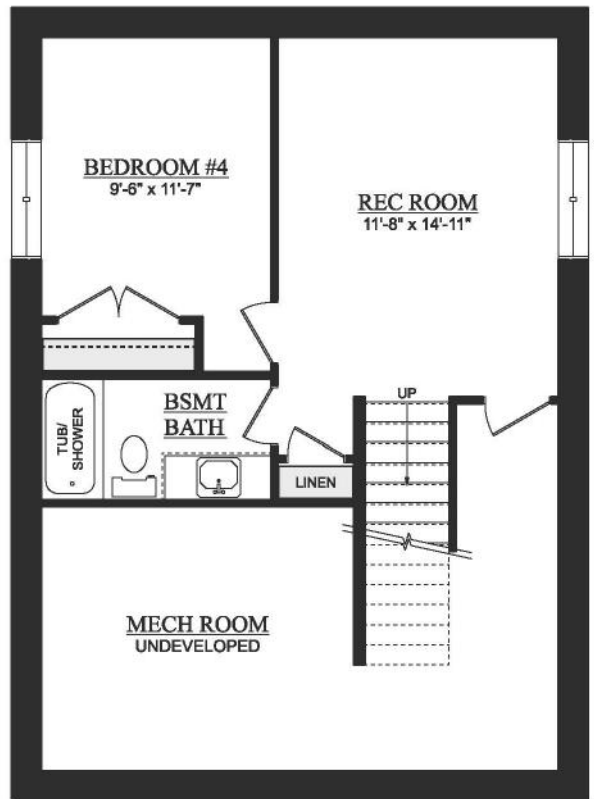


# Henrik

1,932 Sq Ft | 3 Bedrooms | 2.5 Bathrooms  
24' wide



**SECOND FLOOR PLAN**  
**\*OPT. 4TH BEDROOM\***  
**1116 SQ. FT. (RMS)**



**DEVELOPED BASEMENT**  
**415 SQ. FT. (DEVELOPED AREA)**

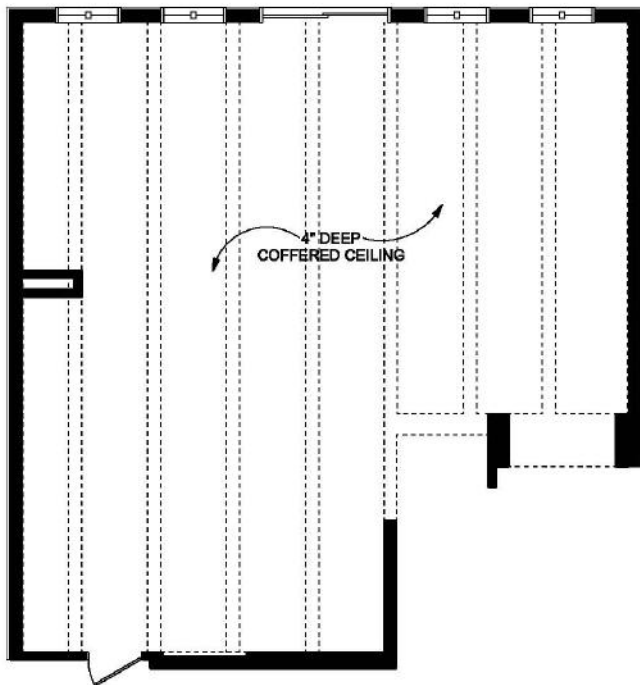
Artist's rendition may be different than actual home

Nov 20/23



# Henrik

1,932 Sq Ft | 3 Bedrooms | 2.5 Bathrooms  
24' wide



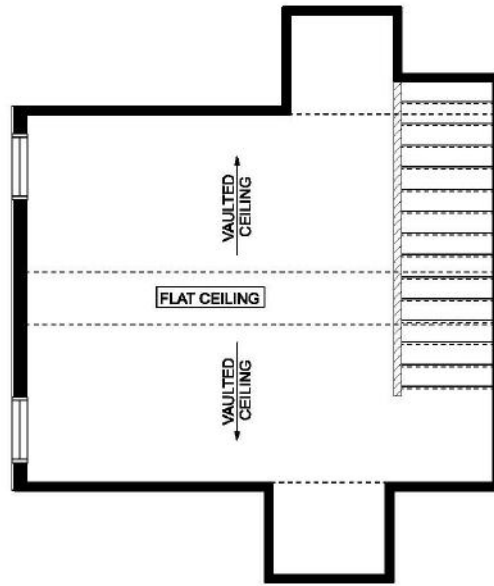
OPT. MAIN FLOOR  
COFFERED CEILING



OPT. FOYER  
CANTILEVER



OPT. BONUS ROOM  
CANTILEVER



OPT. BONUS ROOM  
VAULTED CEILING

MAY DIFFER DEPENDING  
ON ROOF STYLE

Artist's rendition may be different than actual home

Nov 20/23