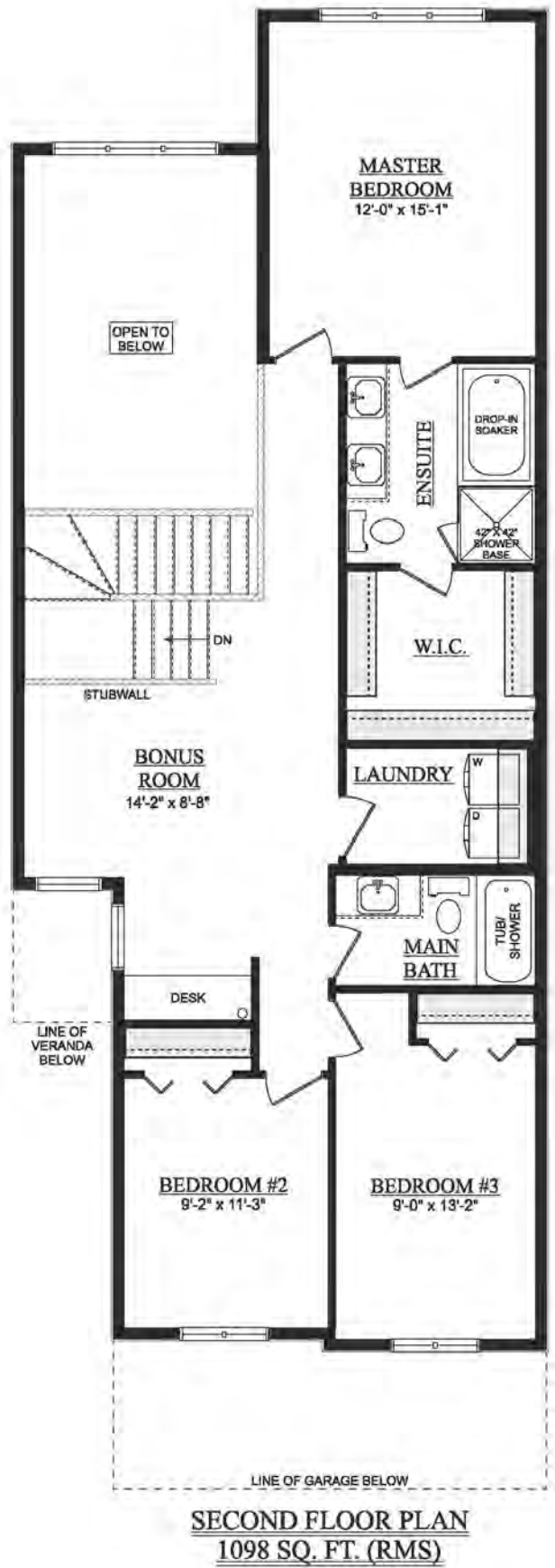
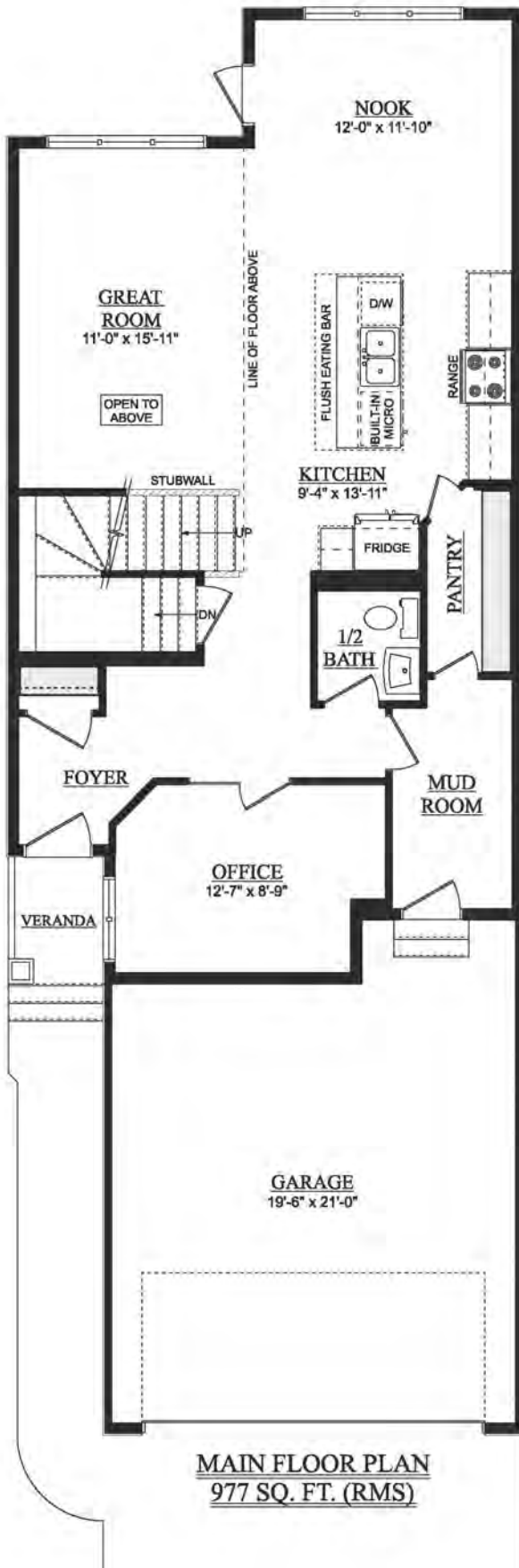


Kelowna

2,075 Sq Ft | 3 Bedrooms | 2.5 Bathrooms
24' wide



Craftsman



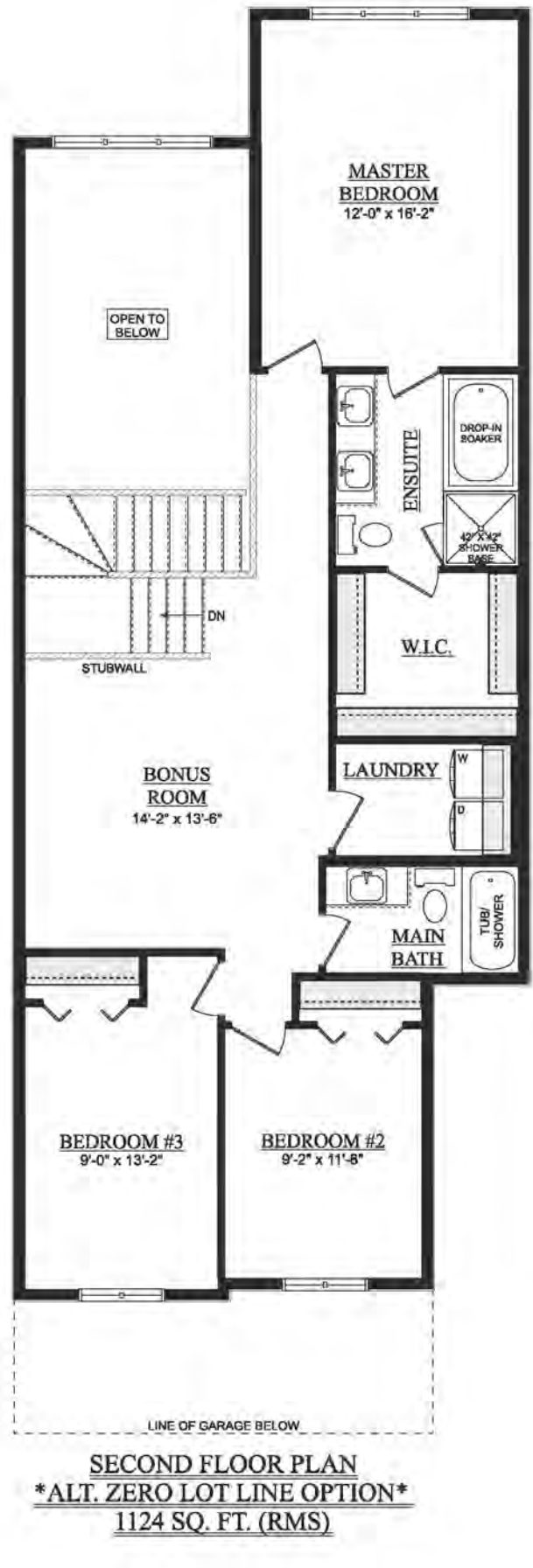
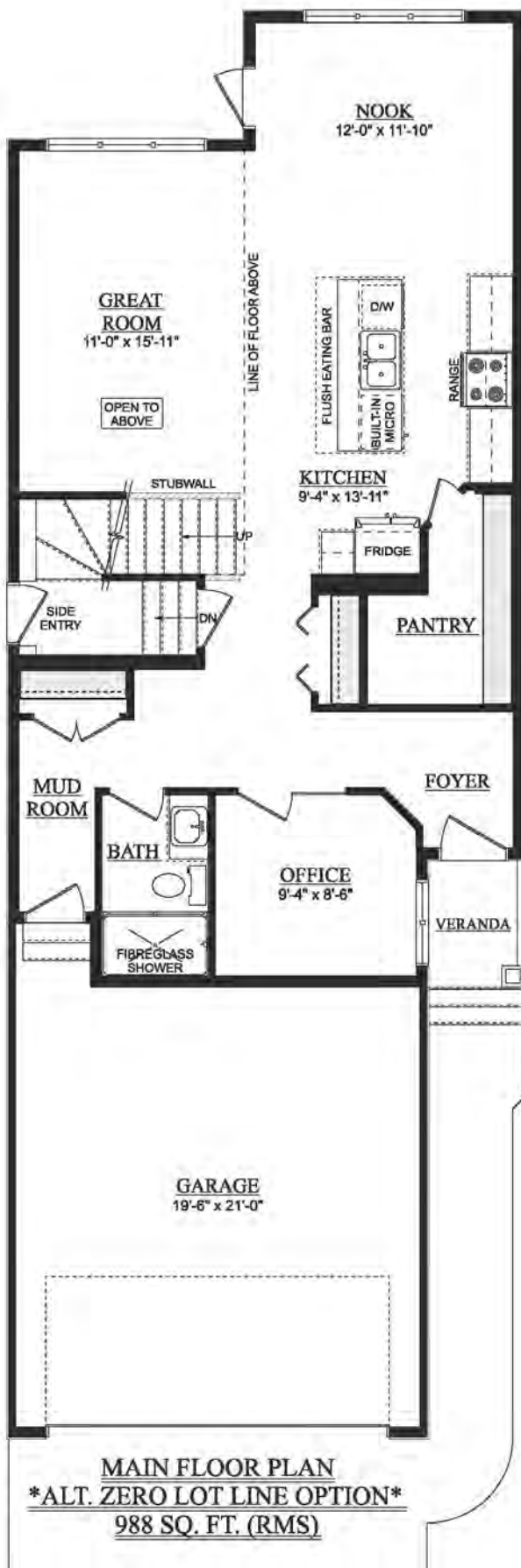
Artist's rendition may be different than actual home

Jan 30/25



Kelowna

2,075 Sq Ft | 3 Bedrooms | 2.5 Bathrooms
24' wide

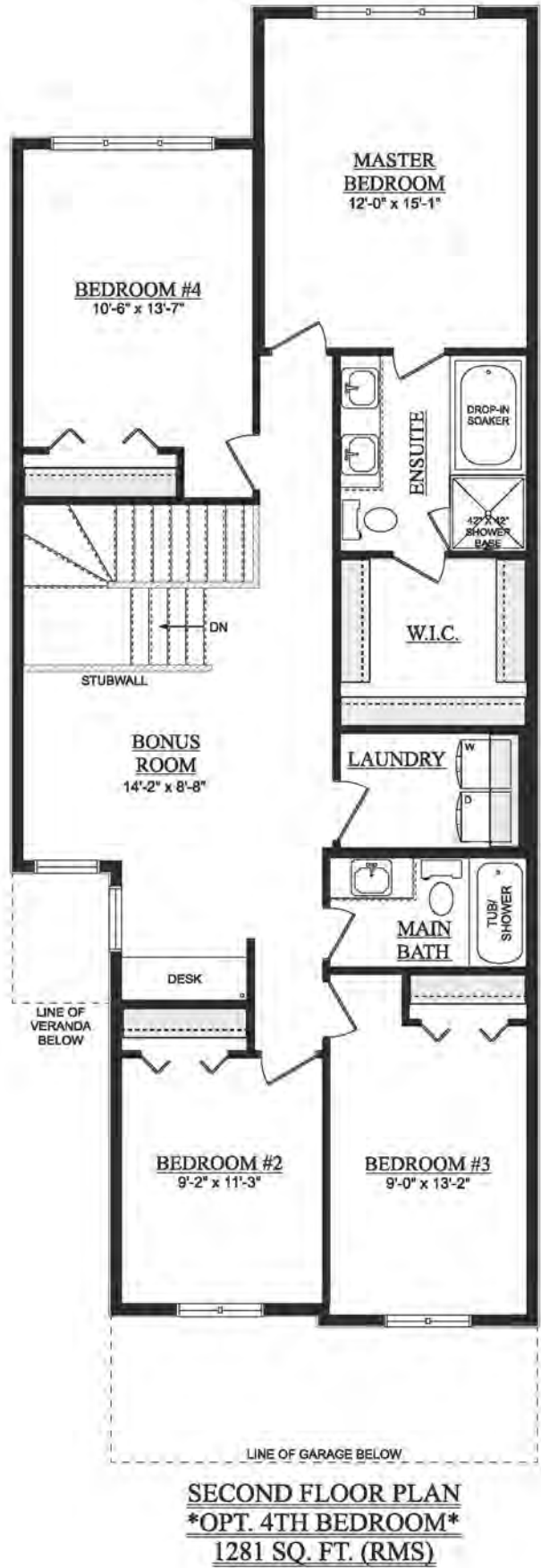
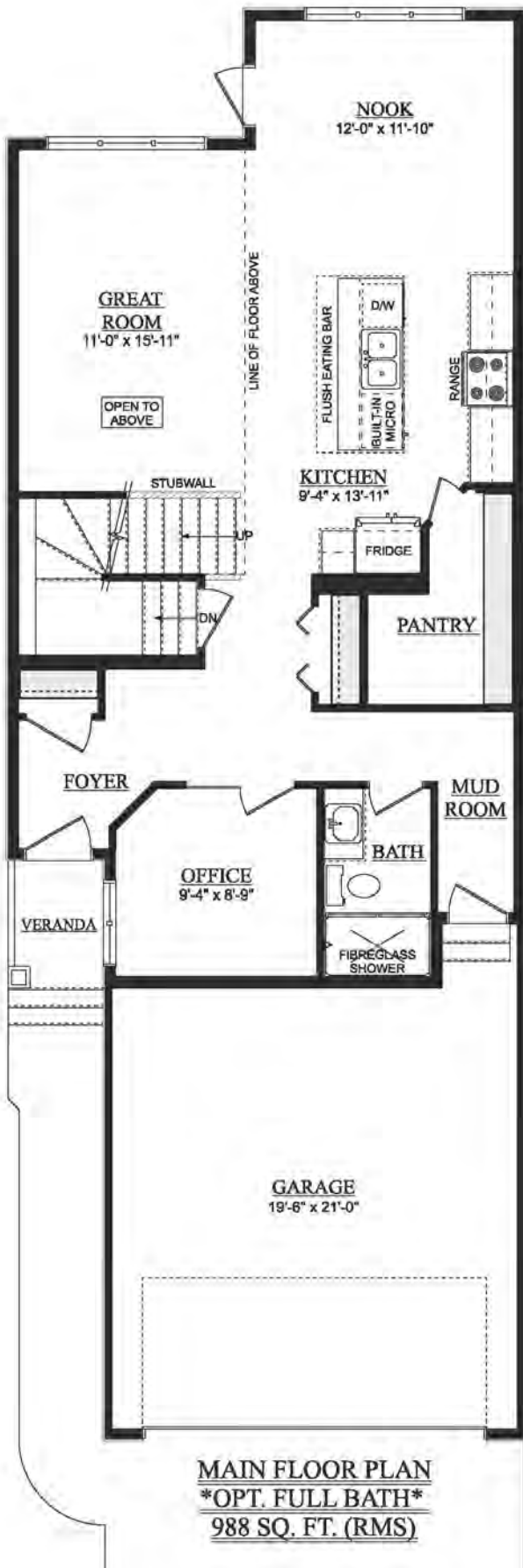


Artist's rendition may be different than actual home

Jan 30/25

Kelowna

2,075 Sq Ft | 3 Bedrooms | 2.5 Bathrooms
24' wide



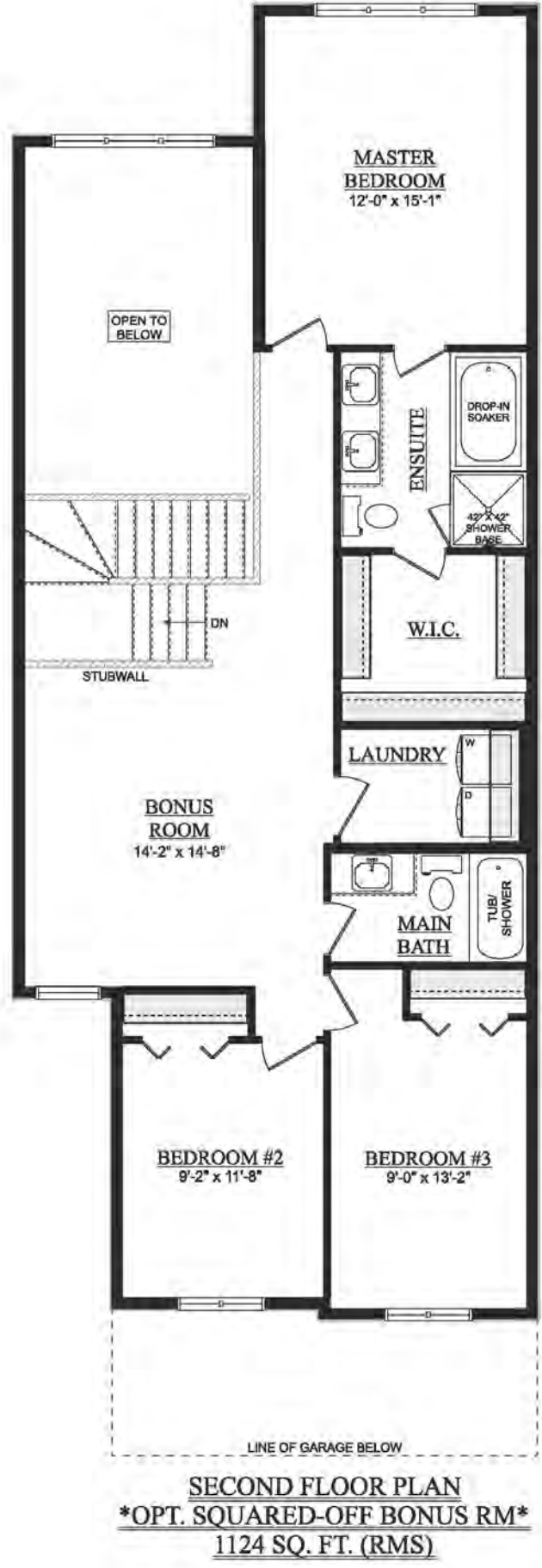
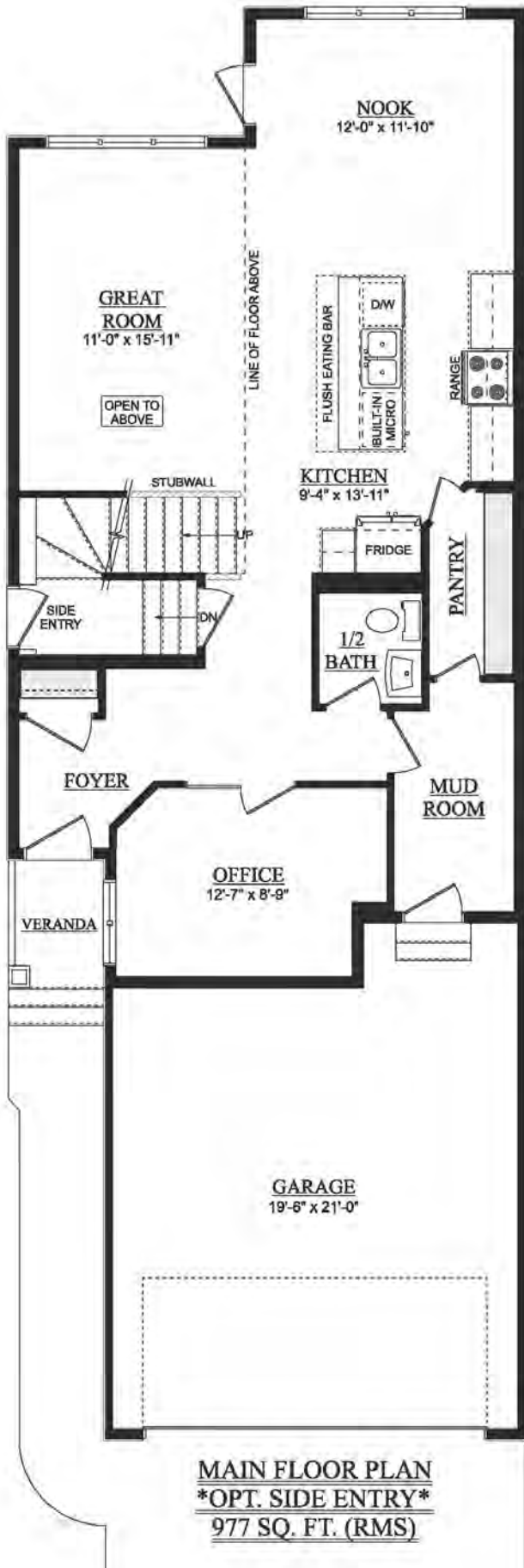
Artist's rendition may be different than actual home

Jan 30/25



Kelowna

2,075 Sq Ft | 3 Bedrooms | 2.5 Bathrooms
24' wide



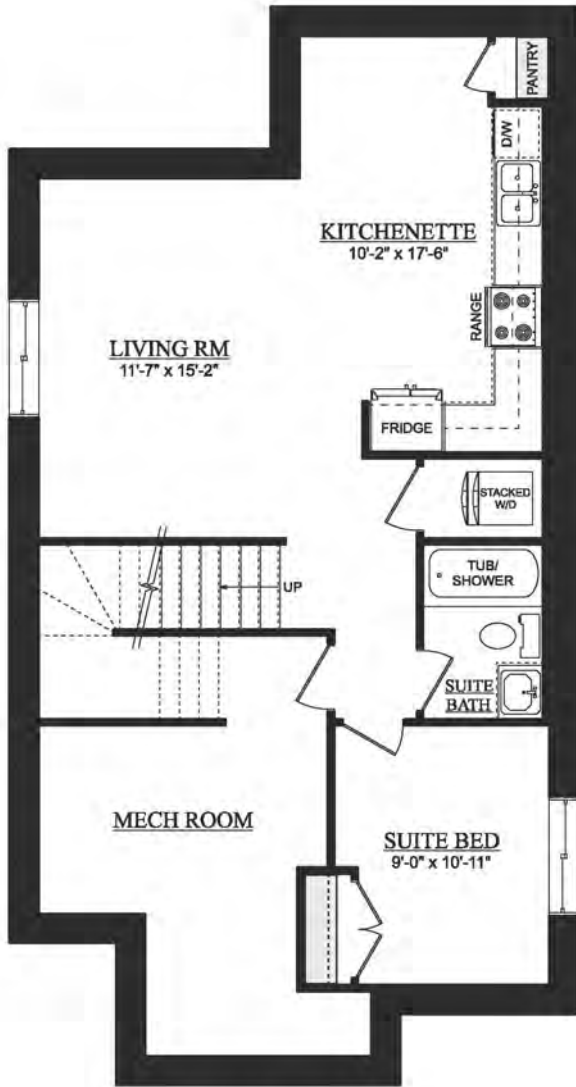
Artist's rendition may be different than actual home

Jan 30/25

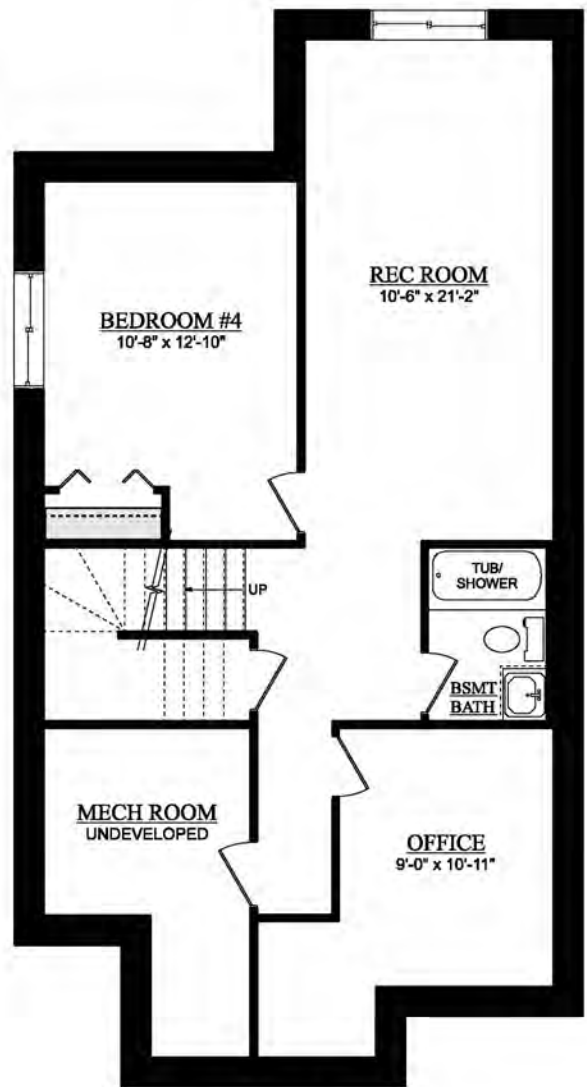


Kelowna

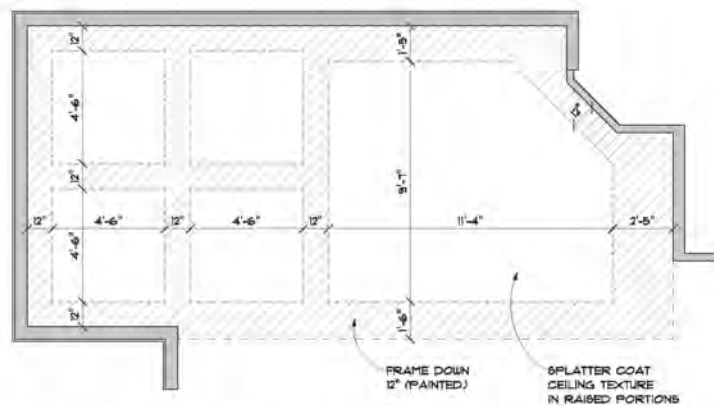
2,075 Sq Ft | 3 Bedrooms | 2.5 Bathrooms
24' wide



OPT. SECONDARY SUITE
642 SQ. FT. (DEVELOPED AREA)



DEVELOPED BASEMENT
708 SQ. FT. (DEVELOPED AREA)



COFFERED CEILING DETAIL

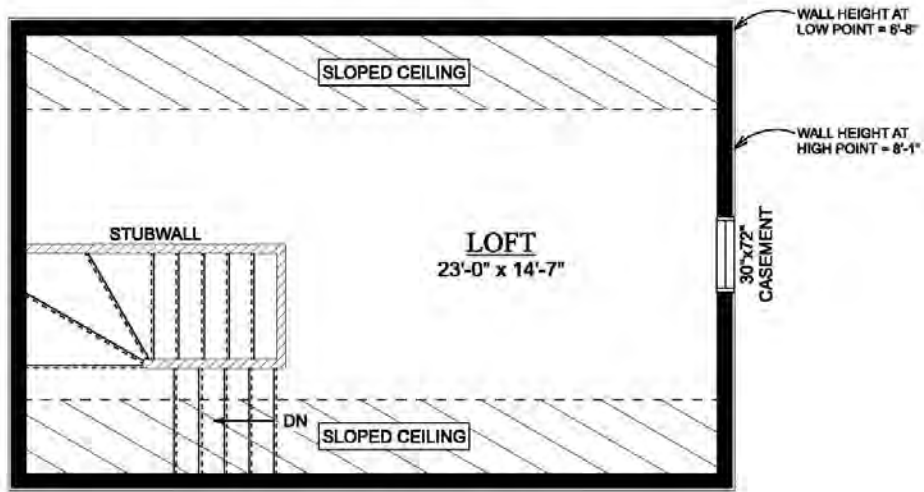
SCALE: 1/4" = 1'-0"

Artist's rendition may be different than actual home

Jan 30/25

Kelowna

2,075 Sq Ft | 3 Bedrooms | 2.5 Bathrooms
24' wide

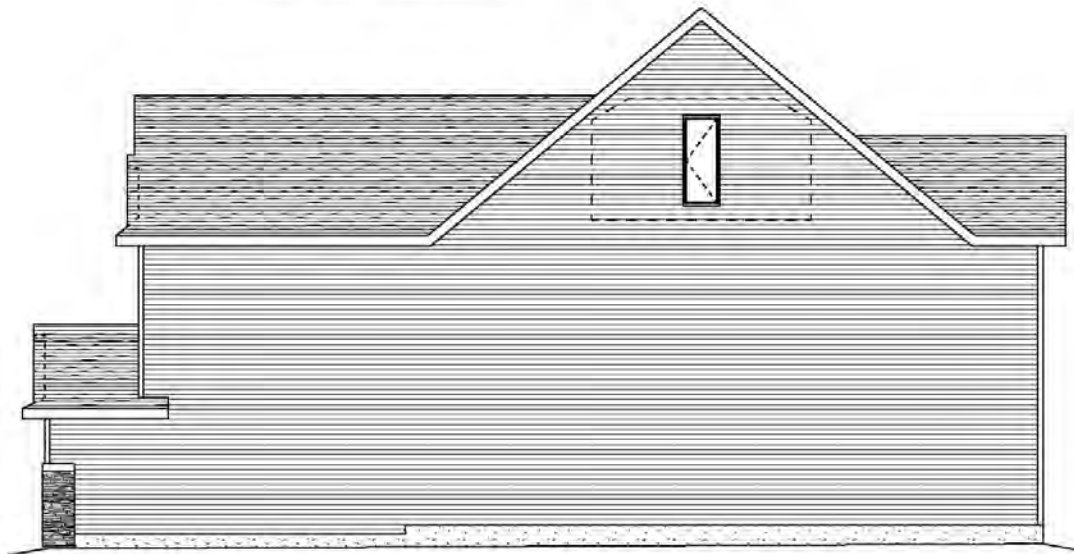


LOFT FLOOR PLAN
374 SQ. FT. (RMS)



FRONT ELEVATION

- KELOWNA LOFT OPTION:**
- INCREASES UPPER ROOF PITCH TO 10:12
 - ADDS STAIRCASE FROM 2ND FLOOR BONUS RM TO LOFT
 - INCLUDES A 30"x72" CASEMENT WINDOW
 - ADDS 374 SQ. FT. OF DEVELOPED AREA



RIGHT ELEVATION

Artist's rendition may be different than actual home

Jan 30/25

